



Adopted 8 April 2015

Contents

Introduction.....	3
Section 1: Context and Highlights of the Singleton Lifestyle Plan for Older People	5
Benefits of the Singleton Lifestyle Plan for Older People	6
Principles	8
Our Older Community – a snapshot.....	10
Talking with the Community	12
Format of the Actions	16
Review and Evaluation	17
Key Themes	18
Our Community	18
Our Places	20
Our environment	22
Our Community Leadership.....	23
Section 2: Action Plan.....	24
References.....	40
Further Information	42

Notation: This document has been prepared with accessibility in mind. This entails a larger font, sentence case only and open spacing around text. If you would like to know more, please contact Community Development on 02 6578 7290.

Introduction

Singleton currently has a population of over 22,000 people. Of that, there are 4,806 people aged 55 years and over. While this proportion of older people within the Singleton local government area is currently well below the state and national averages, the population of Singleton and surrounds is rapidly ageing. Over the next 20 years, numbers of people aged 65 and over are expected to double within the Singleton local government area. This population will be diverse in terms of its age and stage of life, life experience, health and financial status pointing to a diversity of needs, priorities and lifestyle choices that will require a variety of approaches and strategies to support positive ageing.

Council has always considered the needs of its ageing population and as such resolved to develop and implement an Ageing Strategy for the Singleton community. Council also determined to take a holistic approach to all matters on ageing and determined that the strategy should be called the “Singleton Lifestyle Plan for Older People”. The Lifestyle Plan will enable Council to develop an approach which recognises the changing needs of the Singleton local government area and which directs actions and resources appropriately to ensure that the diverse needs of older people will be met. The Lifestyle Plan will help ensure that Council can deliver suitable infrastructure and services over which it has direct control or influence and that it develops integrated responses on issues where Council may lead or partner with other agencies and organisations. The focus on the Lifestyle Plan is on identifying priorities, achievable actions and Council’s role in implementing the actions, so that a clear pathway is established to anticipate and address ageing issues within the local government area.

The Lifestyle Plan is divided into two sections. The first section sets the context and highlights the following four key themes:

- Our Community
- Our Places
- Our Environment
- Our Community Leadership

Within each of the themes are the key issues identified for older people and strategies in response to these. These issues are a combination of what older people have told us and literature and policy reviews. From this, strategies were developed from a combination of information gathered from older people, feedback from our service providers and these were then benchmarked against current literature, policy and service trends.

The second section of the Lifestyle Plan is an Action Plan in response to each of the four themes. There were a series of discussions with key Council staff to ensure the proposed Action Plan is achievable within the time frames allocated and the budget and resources implications have been considered.



Section 1

Context and Highlights of the Lifestyle Plan

Benefits of the Singleton Lifestyle Plan for Older People

This Lifestyle Plan recognises the many agencies that service the Singleton local government area and that all have an important part to play in addressing the needs and aspirations of current and future older populations. By taking a partnership approach to meeting the changing needs of older residents, the benefits that result from implementing this Lifestyle Plan will be maximised for older people, the broader Singleton community, Singleton Council and other key agencies.

The community will benefit from:

- The promotion of age-friendly communities. Age-friendly communities are places where older people can get around easily and safely, buildings are accessible, housing is universally designed, a range of affordable transport options are available, there are a range of opportunities to participate in community life and all community members respect each other. All community members will benefit from living in communities with these characteristics.
- The promotion of intergenerational respect and appreciation, which will contribute to building stronger, more cohesive communities. Through programs that encourage mentoring of young people by older volunteers and workers, younger generations will benefit from the wisdom and knowledge passed onto them and gain a greater understanding of the important role older people play in our communities.

Older people will benefit from:

- Being reassured that Council has a vested interest in the wellbeing of older people and is willing to listen to them and incorporate their needs into Council programs and services.
- Feeling valued by other community members due to an increased understanding and respect for the role older people have in the community. Mentoring programs will especially help to ensure that older people feel valued by young people for passing on their wisdom and experience.

Council will benefit from:

- Being assured that by taking a partnership approach and supporting the many established service providers and community organisations in the region, the needs of older Singleton local government residents will be addressed by those best placed to do so.
- Focusing more energy on advocating to the state and federal governments for necessary infrastructure, services and programs in the local government area which support older people and ultimately benefit all community members.

The ageing sector will benefit from:

- Council's support in the facilitation of opportunities for networking and community, information and resource sharing. This will help to ensure that service delivery is co-ordinated and appropriate and will allow agencies to focus on their business of delivering good outcomes for older residents in the Singleton local government area.

Principles

The principles that underpin the Singleton Lifestyle Plan for Older People are:

- **Equitable access for all**
Ensuring all older people have equitable access to services, community infrastructure and programs that enhance their quality of life.
- **Dignity and respect**
Ensuring older people's rights are upheld, they continue to live in dignity, and their valuable place in the community is acknowledged and respected by all.
- **Diversity**
Recognising the diversity among seniors including their age, ability, gender, sexuality, cultural and linguistic background and geographic location.
- **Safety**
Supporting initiatives that help older people feel physically and emotionally safe in their homes and in the community.
- **Participation and connectedness**
Enhancing opportunities for older people to remain socially connected through participation in community life and decision-making processes.
- **Opportunities for all to an independent lifestyle**
Facilitating opportunities for older people to live the lifestyle of their choice.

- **Collaborative partnerships**

Engaging and partnering with all levels of government, non-government, business and the community in working towards shared outcomes.

These principles have been developed in line with a number of strategic documents, including the NSW Government's *NSW Ageing Strategy* and *World Health Organization Active ageing: a policy framework*.

In particular, the Singleton Lifestyle Plan for Older People builds on the World Health Organisation (WHO) concepts of active ageing and age-friendly cities. The WHO active ageing framework is based on balancing three focus areas for a person to age well: health, participation and security. Building on this, an age-friendly community encourages active ageing by maximising opportunity for health, participation and security in order to enhance people's quality of life as they get older (WHO 2007: 1). The positive ageing principles build on this concept by taking a holistic approach to ageing well.

The positive ageing principles also directly relate to key areas highlighted in the NSW Government's *Ageing Strategy*.



Our Older Community – a snapshot

This Lifestyle Plan defines older people as people aged 55 years and over. There is a vast amount of diversity within this demographic; the points of difference are almost endless – age, gender, cultural background, employment status, participation in the community, sexuality, health, ability, or geographic location. This Lifestyle Plan recognises this diversity and the variety of issues that affect older people in different ways.

The following table is based on the 2006 Census data and shows the projected increase in the older population for the Singleton local government area between 2011 and 2036.

Table 1: Increase in older population for Singleton LGA

<i>Age Group</i>	<i>2011</i>	<i>2021</i>	<i>2036</i>
<i>55 – 64</i>	<i>1410</i>	<i>1610</i>	<i>1760</i>
<i>65 – 74</i>	<i>1370</i>	<i>2190</i>	<i>2740</i>
<i>75 - 84</i>	<i>780</i>	<i>1060</i>	<i>2010</i>
<i>85 +</i>	<i>300</i>	<i>410</i>	<i>900</i>
<i>Total</i>	<i>2450</i>	<i>3660</i>	<i>5650</i>

Based on the 2006 census data, this increase in population in people aged 65 and over equates to:

- 2011, an increase of 10.1%
- 2021, an increase of 13.4%
- 2036, an increase of 17.7%

The same information is shown a different way in Figure 1 below.

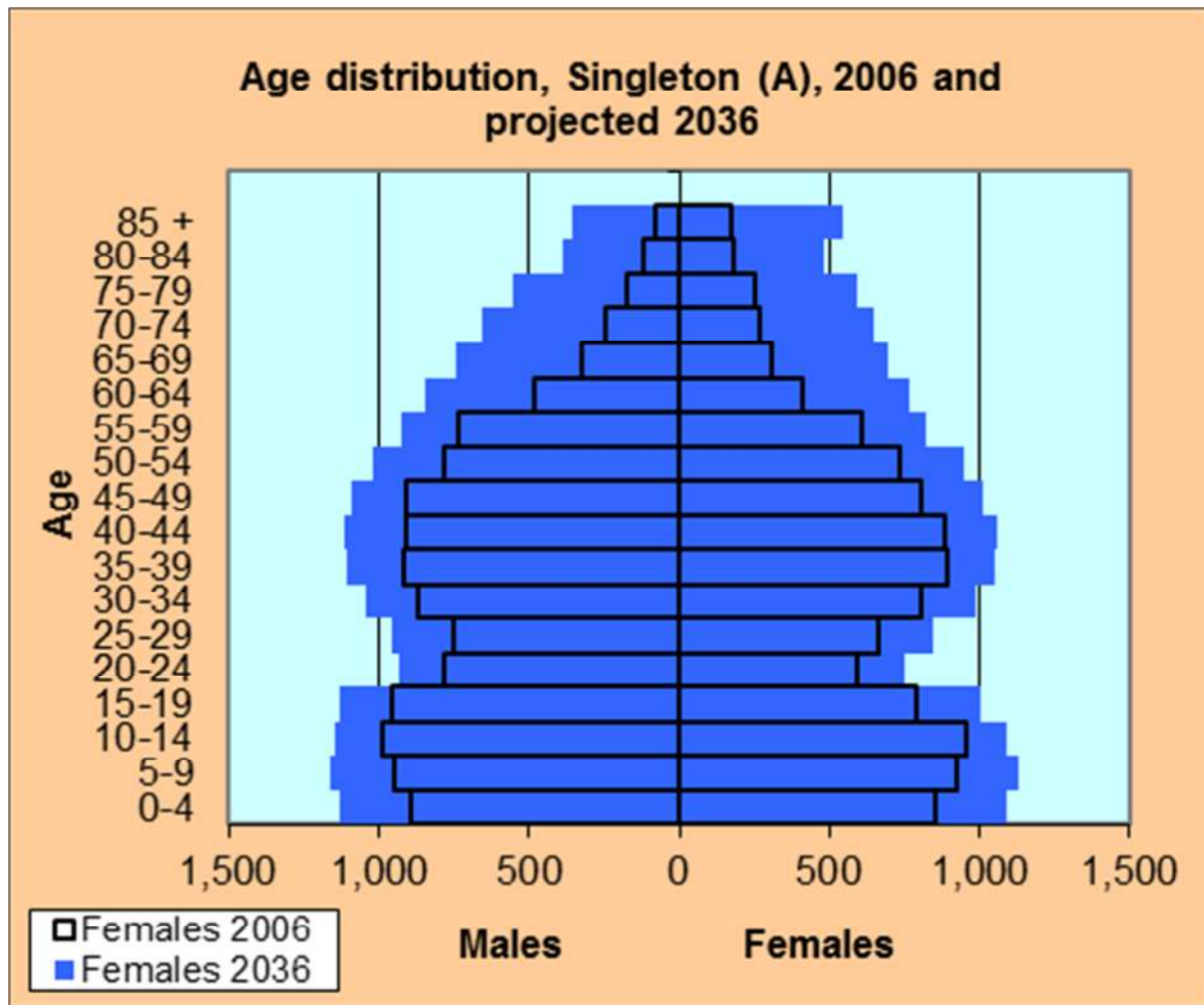


Figure 1: Singleton Population Pyramid 2006 – 2036 change

This information highlights the need for Council to start thinking about its ageing residents now, which is why this Lifestyle Plan is so important. This Plan provides Council with direct input from the community about what is important to them and their suggestions to Council on how to improve the services and facilities provided by Council.

Talking with the Community

The Singleton Lifestyle Plan for Older People was undertaken to better understand the issues, needs and aspirations of older people in the Singleton local government area. A survey was distributed to residents via a number of means including the Library, local chemists, Senior Citizens Centre, ageing service providers and community organisations. Group consultation sessions were held with a number of community, sporting or special interest groups. In total, consultation with both groups and individual, took place with 6.9% of the total population in the Singleton local government area aged over 55 years.

A snapshot of those results is outlined below.

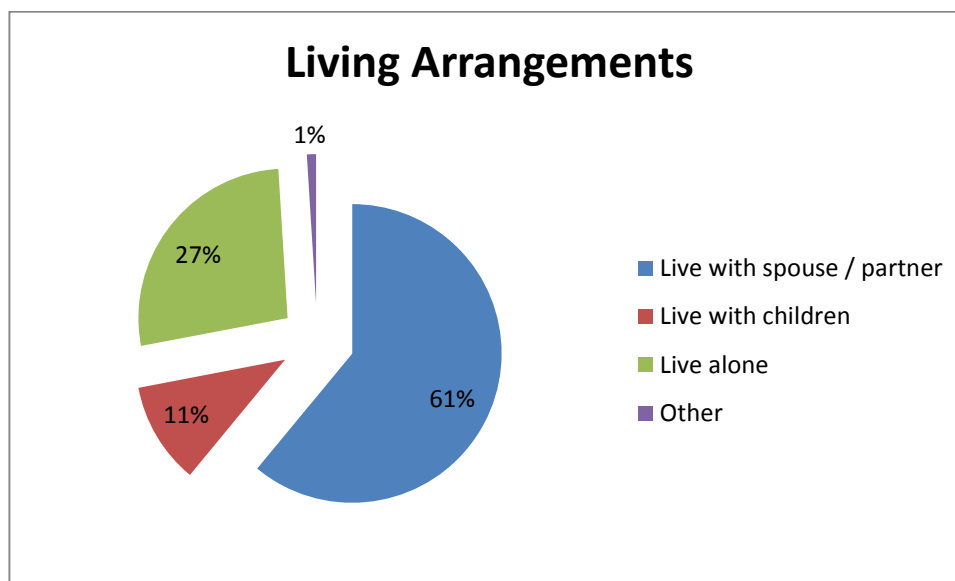


Figure 2: Living Arrangements

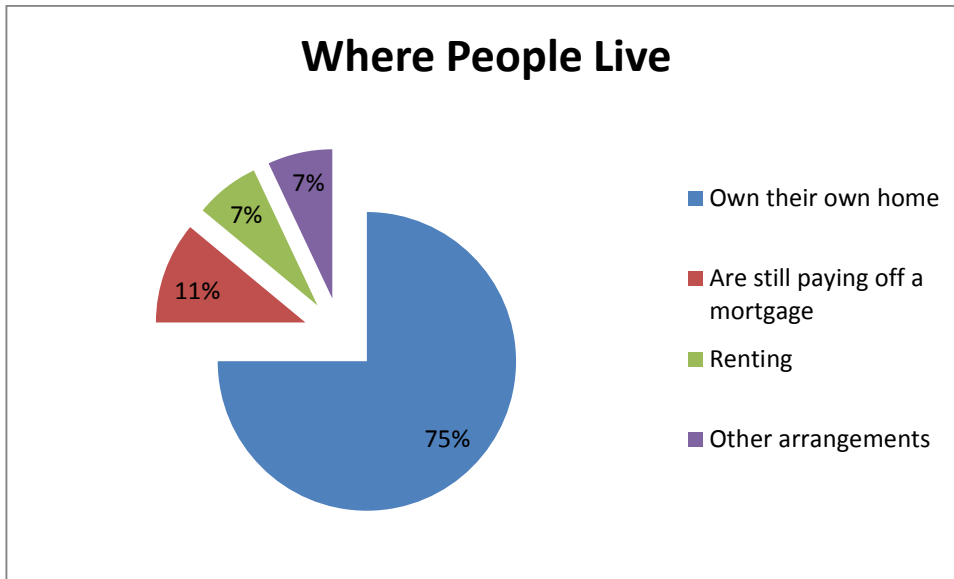


Figure 3: Where People Live

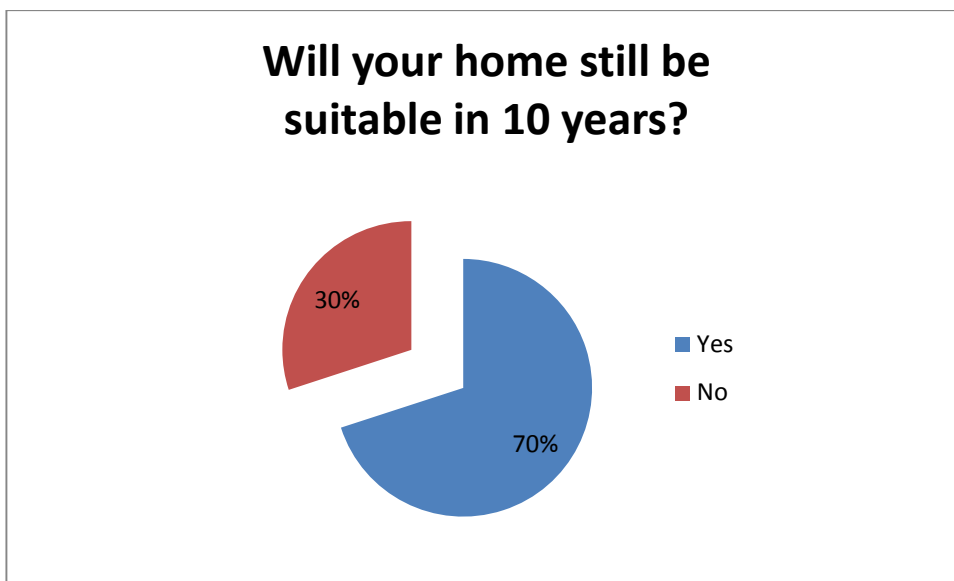


Figure 4: Will Your Home Still Be Suitable In 10 Years?

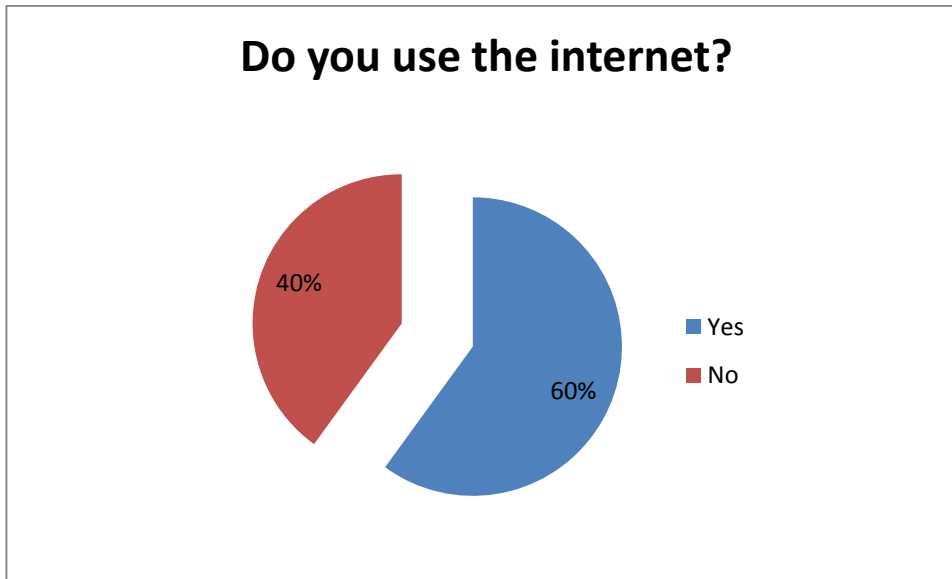


Figure 5: Do You Use The Internet?

In terms of getting out and about, survey responders were clear in stating that they predominantly used their car or walked. Another well-used form of transport was relying on friends and family.

The five most important factors for people over the age of 55 to live a healthy and happy life are:

1. Good health
2. Interacting with friends and family
3. Being physically active
4. Access to health and support services
5. Financial security

The top five challenges people are facing are:

1. Maintaining health and fitness
2. Ability to maintain their home and garden
3. Being able to live independently
4. Access to health and support services
5. Concerns about safety

When asked to identify the best way for people to get information about what's happening in the community on local services, facilities and activities, the top five methods were identified as:

1. Newspaper
2. By mail
3. Television
4. Radio
5. Email

All information gathered by either individual survey or group consultation has been taken into consideration during the development of this plan.

The final phase of the engagement process was a series of discussions with Council staff which resulted in the actions in the Lifestyle Plan. These discussions focused on gaining an understanding how Council departments were currently working to consider the needs of older people and to gain feedback on proposed actions for Council. The discussions with staff assisted us to establish a 'whole of Council approach' to an ageing population and to ensure the proposed strategies and actions are achievable within the timeframe allocated and that budget and resource implications have been properly considered.



Format of the Actions

For each action in the Lifestyle Plan, a lead section of Council has been identified and the financial year in which the action is to commence. The lead section is accountable for implementation of the action, collaboration across Council, building partnerships with external stakeholders and evaluation of impacts. The diagram of council's organisational structure below highlights the different sections within Council which are mentioned in the actions.

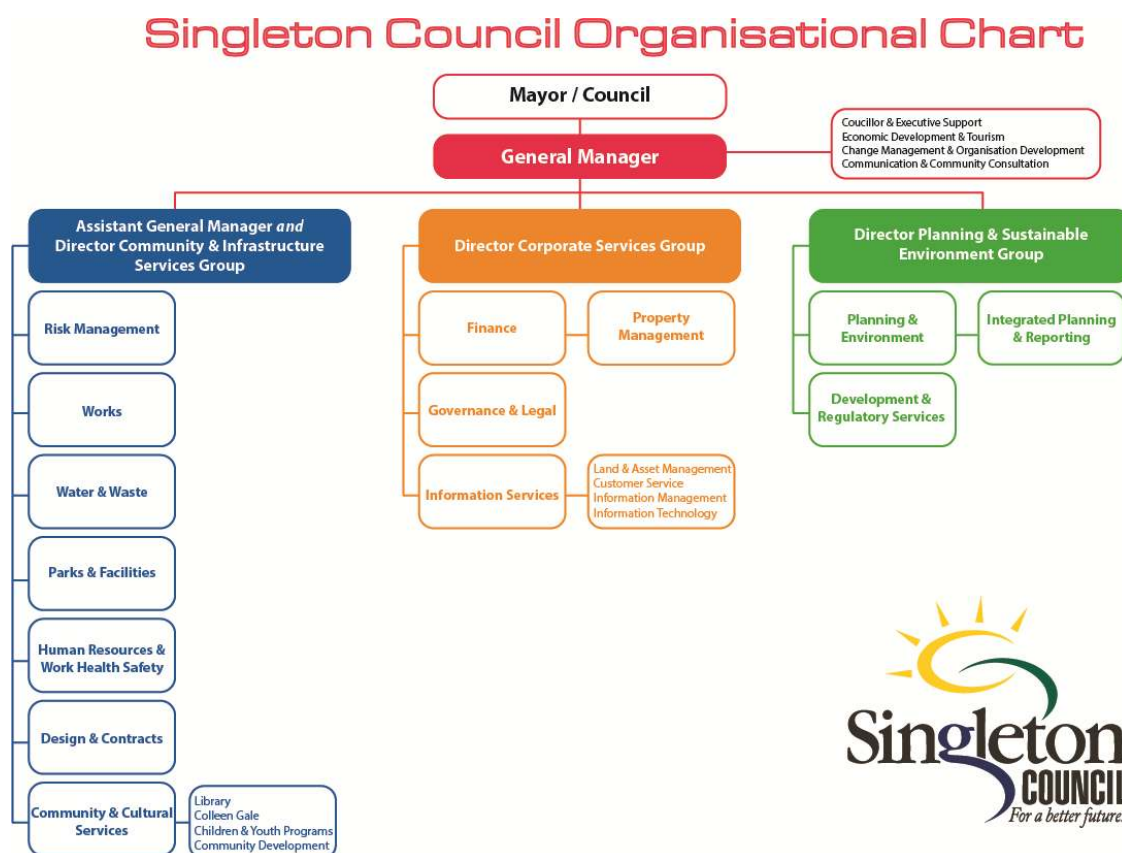


Figure 2: Singleton Council Organisational Chart

The Lifestyle Plan recognises that success relies upon building partnerships with businesses, the community sector, groups, residents and other government agencies to enhance outcomes for older people. As such, we are keen to hear from external stakeholders who may want to partner with us on any of the actions listed in this Lifestyle Plan to enhance outcomes for older people.

Review and Evaluation

To ensure ongoing input from the community and respond to the changing needs and expectations of the community and older people, we will continue to engage and connect with older residents through partnerships with organisations and community groups across the Singleton local government area.



Key Themes

Key issues arising from both individual and group consultation have been collated and grouped into four themes: “Our Community”; “Our Places”; “Our Environment”; and “Our Leadership”. The key issues and others raised from the consultation process will that contribute to the development of Singleton local government area as an age-friendly community, have been incorporated into the Action Plan in the next section of this document.

Our Community

The outcomes identified in Council’s Delivery Program and Operational Plan for our community are:

- The community feels supported and cared for through the provision of services and facilities
- The community comes together to celebrate
- The community has a strong sense of identify and place
- The community learns and grows together
- The community is encouraged to live a healthy and active lifestyle.

From the consultation conducted throughout this process, the community key issues relating to “Our Community” include:

- Council already provide services and facilities to its older residents, however, it appears that not all residents know about them. Promotion of these services and facilities could be incorporated into existing Council communication tools.
- The request for the development of a single “quick reference guide” for services available to the ageing residents of the Singleton local government area. Content

would include not only government and commercial agencies, but also services and interest groups that cater to the ageing population.

- Many residents consulted in the development of the Lifestyle Plan mentioned that they would like to see more inclusion of the Army into community and Council events and activities. It was felt that the Army was a significant contribution to what makes Singleton great, however, they do not seem to part of the local community as much as they could be.
- The issue of home and garden maintenance for those residents living in their own home was raised on numerous occasions. It was felt that the task of maintaining their own property was becoming more and more difficult. Council has the opportunity to develop partnerships with other organisations to explore and promote home safety audits to identify domestic safety hazards as well as working with these organisations to disseminate information and education material on safety around the home.



Our Places

The outcomes identified in Council's Delivery Program and Operational Plan for our places are:

- The community is safe
- The community has sustainable assets
- The community is well planned – sustainable, accessible, affordable
- The community values its heritage
- The community has vibrant spaces and places
- The community is well connected
- The community is attractive for locals and visitors

From the consultation conducted throughout this process, the community key issues relating to "Our Places" include:

- Walkability in Singleton is an important factor for the ageing population in the Singleton local government area. The number and quality of the footpaths was the issue that was most raised throughout all consultation.
- More and more people are using the existing cycleways that Council have provided, however, there were a significant number of residents that were not aware of the complete cycleway network. This important resource could be promoted more to the ageing community.
- The improvement of the Singleton CBD was also an issue that was raised by community members throughout consultation. It was felt that John Street could be made more attractive while at the same time traffic flow could be improved to assist pedestrians.
- The quality of Council's public recreation spaces was raised as a positive for Singleton on a number of occasions through the consultation phase. However, it was also suggested that more public toilets could be included in various public parks, particularly Alroy and Nowlan Park, along with barbecue facilities at Nowlan Park. It

was also suggested that recycling bins be installed in appropriate parks throughout Singleton and villages.

- Due to the increasing number of diabetics in the Singleton local government area, the request for the installation of a “sharps bin” in a public space was raised on a number of occasions.
- It was identified through the consultation process that the existing Senior Citizens Centre could be revitalised to ensure the long term viability of the centre to meet the changing needs of the older population.
- Being able to get around on public transport is an important issue for Singleton’s ageing population. The issue of not only having access to a public bus service to the villages, but also more trains in and out of Singleton was raised on numerous occasions. Residents would like to see Council lobbying for these important issues when and where appropriate.



Our Environment

The outcomes identified in Council's Delivery Program and Operational Plan for our environment are:

- The community protects and enhances the natural and built environment
- The community is encouraged to be environmentally aware
- The community is at the forefront of alternate energy
- The community is conscious of their environmental footprint
- The community is sustainable in its actions

From the consultation conducted throughout this process, the community key issues relating to "Our Environment" include:

- An issue that was raised on numerous occasions throughout the consultation process was the reclamation of Burdekin Park from the bats. It was understood that Council was addressing the issue, however, residents felt that as Burdekin Park could no longer be used as a war memorial, that it was indeed a great loss to the community.
- Residents would also like to see Council being more proactive in the monitoring of air quality and working with the various mines to ensure air quality remained within the acceptable zones.
- Recycling was important to those residents consulted and as such an issue that was raised was the request for Council to investigate the viability of installing green waste bins across the local government area.
- It was understood by residents that Singleton, by its very location, attracted a large number of visitors to the local government area. An issue raised in the consultation process was for Council to investigate the installation of dump points for motor homes. It was felt that if travellers could use dump points located in the Singleton local government area, then they might just stay a little longer in the region and contribute to the economy.

Our Community Leadership

The outcomes identified in Council's Delivery Program and Operational Plan for our community leadership are:

- The community is informed and active in decision making
- The community is recognised for its leadership
- The community has a diverse economy
- The Council is efficient and effective in the delivery of services to our community
- The Council promotes Singleton and its diversity
- The business leaders work collaboratively to strengthen our community

From the consultation conducted throughout this process, the community key issues relating to "Our Community Leadership" include:

- While statistics show that crime committed involving seniors is actually quite low, seniors actually feel that they are vulnerable. As such the matter of the Singleton Police Station being closed overnight was raised as an issue on numerous occasions.
- It was recognised by residents consulted that Singleton is lacking accommodation options for its active and healthy retirees. It was raised quite often that an independent living retirement village could be encouraged to establish itself in Singleton so that older residents do not have to move out of the Singleton local government area.
- An important issue for all residents aged over 55 years was the need to feel they were active in Council's decision making. It was requested that Council not only consult with residents where necessary, but to also provide feedback as a result of that consultation. Another issue raised was the need for dissemination of information from Council, which could be provided at community Council meetings in various villages throughout the Singleton local government area.



Section 2

Action Plan

Action Plan

Our Community

The Singleton local government area community is safe, healthy, smart and united.

Delivery Program (References to Council's Delivery Program is in brackets)	Actions	Time (year action to start)	Responsibility	Funding
Council supports, facilitates and promotes a wide range of accessible activities and events, encouraging community involvement (1.1.2)	<ul style="list-style-type: none">Where and when appropriate the Army be invited to participate in Council events to promote inclusiveness.	2014/2015 (Ongoing)	Community & Cultural Services with Economic Development	Operating Budget

Delivery Program (References to Council's Delivery Program is in brackets)	Actions	Time (year action to start)	Responsibility	Funding
Council supports, facilitates and promotes a wide range of accessible activities and events, encouraging community involvement (1.1.2)	<ul style="list-style-type: none"> To counteract social isolation, Council will hold an annual rural event that is designed specifically for people over 55 years. 	2014/2015	Community & Cultural Services	Operating Budget
Council supports, facilitates and promotes a wide range of accessible activities and events, encouraging community involvement (1.1.2)	<ul style="list-style-type: none"> To provide mentoring opportunities through a partnership with the Youth Action Team and members of the U3A. 	2015/2016	Community & Cultural Services	Operating Budget

Delivery Program (References to Council's Delivery Program is in brackets)	Actions	Time (year action to start)	Responsibility	Funding
Provide and promote services and facilities that meet the needs of our community through various stages of life (1.3)	<ul style="list-style-type: none"> Promotion of existing Council services be included where appropriate in Council communication methods to older residents on what is available to them. 	2014/2015 (Ongoing)	Community & Cultural Services with Communication & Community Consultation	Operating Budget
Singleton has a greater diversity of housing, a mixture of densities, supported housing (1.3.2)	<ul style="list-style-type: none"> Work with appropriate bodies to facilitate the development of an independent living retirement village. 	2017/2018	Economic Development and Community & Cultural Services	Operating Budget

Delivery Program (References to Council's Delivery Program is in brackets)	Actions	Time (year action to start)	Responsibility	Funding
Singleton has a greater diversity of housing, a mixture of densities, supported housing (1.3.2)	<ul style="list-style-type: none"> Consult with Council's Planning area to ensure independent living retirement villages-type developments are included in the Local Environment Plans and Development Control Plans. 	2017/2018	Planning & Sustainable Environment	Operating Budget
Council supports and plans for our ageing population (1.3.4)	<ul style="list-style-type: none"> Through existing partnerships with government or industry agencies a "quick reference guide" be developed incorporating information on services available to older residents in the Singleton local government area. 	2014/2015	Community & Cultural Services	Operating Budget

Delivery Program (References to Council's Delivery Program is in brackets)	Actions	Time (year action to start)	Responsibility	Funding
Council supports and plans for our ageing population (1.3.4)	<ul style="list-style-type: none"> Develop and promote the role of the Library as the key source of information about what is available for older people. 	2014/2015	Community & Cultural Services	Operating Budget
Council supports and plans for our ageing population (1.3.4)	<ul style="list-style-type: none"> Work in partnership with the Disability Advisory Committee to advocate on accessibility issues, specifically in relation to access for older people. 	2014/2015	Community & Cultural Services	Operating Budget
Council supports and plans for our ageing population (1.3.4)	<ul style="list-style-type: none"> Annually monitor and review the Singleton Lifestyle Plan for Older People. 	2015/2016	Community & Cultural Services	Operating Budget

Delivery Program (References to Council's Delivery Program is in brackets)	Actions	Time (year action to start)	Responsibility	Funding
Community spaces and places are enhanced (1.4.1)	<ul style="list-style-type: none"> Using Council's Place Management structure ensure the infrastructure needs of older people are included in village plans. 	2014/2015	Community & Cultural Services	Operating Budget
Community spaces and places are enhanced (1.4.1)	<ul style="list-style-type: none"> Implement place making processes to ensure the needs of older people are incorporated into place making activities and projects. 	2014/2015	Economic Development	Operating Budget
Community spaces and places are enhanced (1.4.1)	<ul style="list-style-type: none"> Promote the Library as a safe and comfortable environment for older people during summer / hot weather. 	2014/2015	Community & Cultural Services	Operating Budget

Delivery Program (References to Council's Delivery Program is in brackets)	Actions	Time (year action to start)	Responsibility	Funding
Support lifelong learning initiatives (1.5.2)	<ul style="list-style-type: none"> Promote access to opportunities for lifelong learning and development of new life skills through continued support of community based learning programs such as the University of the Third Age and the Mayoral Scholarship. 	2013/2014	Community & Cultural Services	Operating Budgeting

Our Places

The Singleton local government area places are sustainable, accessible, affordable and adaptable.

Delivery Program (References to Council's Delivery Program is in brackets)	Actions	Time (year action to start)	Responsibility	Funding
Recreation facilities meet community needs (2.1.2)	<ul style="list-style-type: none">• Promotion of the existing cycleway network be promoted using existing Council media opportunities and publications.	2014/2015	Parks & Facilities with Information Technology (GIS)	Operating Budget
Recreation facilities meet community needs (2.1.2)	<ul style="list-style-type: none">• Together with seniors and other organisations for older people, review the role and "naming" of Council's Senior Citizens Centre and identify future options for the long term viability of the Centre that will address the changing needs of the older population.	2014/2015	Community & Cultural Services	Operating Budget

Delivery Program (References to Council's Delivery Program is in brackets)	Actions	Time (year action to start)	Responsibility	Funding
Recreation facilities meet community needs (2.1.2)	<ul style="list-style-type: none"> Extend the network of pathways, walking trails and cycling tracks linked to the wider network of open space in Singleton to cater for the popularity of walking as a recreational activity for all age groups, including older people. 	2014/2015 (ongoing)	Parks & Facilities	Operating Budget
Recreation facilities meet community needs (2.1.2)	<ul style="list-style-type: none"> Develop parks and gardens with interest and destination points that will attract and appeal to older people (such as public art, heritage items, landscaped gardens, seating, shading, water features, outdoor fitness areas). 	2016/2017	Parks & Facilities	Operating Budget

Delivery Program (References to Council's Delivery Program is in brackets)	Actions	Time (year action to start)	Responsibility	Funding
Recreation facilities meet community needs (2.1.2)	<ul style="list-style-type: none"> Install a public toilet, including an accessible toilet and barbecue facilities at Nowlan Park. 	2017/2018	Parks & Facilities	Operating Budget
Our community embraces the principles of sustainability (2.1.3)	<ul style="list-style-type: none"> Using community promotion, encourage the provision of adaptable housing that can be modified to meet the changing needs of home occupiers across the lifespan, through universal design principles. 	2015/2016	Planning & Sustainable Environment	Operating Budget

Delivery Program (References to Council's Delivery Program is in brackets)	Actions	Time (year action to start)	Responsibility	Funding
Our community embraces the principles of sustainability (2.1.3)	<ul style="list-style-type: none"> Through Developer Forums provide information for builders and developers on accessibility requirements and to raise awareness of housing design for an ageing population. 	2015/2016	Planning & Sustainable Environment	Operating Budget
Our community embraces the principles of sustainability (2.1.3)	<ul style="list-style-type: none"> Develop skills and awareness amongst relevant Council staff to highlight age friendly design principles and requirements. 	2015/2016	Planning & Sustainable Environment	Operating Budget

Delivery Program (References to Council's Delivery Program is in brackets)	Actions	Time (year action to start)	Responsibility	Funding
Our community is safer for residents and visitors (2.1.4)	<ul style="list-style-type: none"> Through planning policies, ensure public spaces, neighbourhoods and town centres are designed to maximise safe, convenient and accessible use by all sections of the community, including older people. 	2014/2015 (Ongoing)	Planning & Sustainable Environment with Community & Cultural Services	Operating Budget
Our community is safer for residents and visitors (2.1.4)	<ul style="list-style-type: none"> Provide information to older people to enhance their safety and sense of security, through Council's website and through partnerships with police, government and community organisations on safety for seniors initiatives. 	2014/2015 (Ongoing)	Community & Cultural Services	Operating Budget

Delivery Program (References to Council's Delivery Program is in brackets)	Actions	Time (year action to start)	Responsibility	Funding
Our community is safer for residents and visitors (2.1.4)	<ul style="list-style-type: none"> Utilise existing partnerships with the Singleton Healthy Lifestyle Network to promote health education and prevention programs for older people, such as health and fitness and reducing falls in the home. 	2015/2016	Community & Cultural Services	Operating Budget
Road and infrastructure meetings community needs (2.3.1)	<ul style="list-style-type: none"> Promote Council's CRM system as a method for older people to report environmental hazards. 	2017/2018	Information Management with Community & Cultural Services	Operating Budget

Delivery Program (References to Council's Delivery Program is in brackets)	Actions	Time (year action to start)	Responsibility	Funding
Increased access to and awareness of public transport options (2.4.2)	<ul style="list-style-type: none"> Through the Transport Working Group lobby relevant agencies to improve and encourage provision of accessible public transport options. 	2014/2015	Community & Cultural Services	Operating Budget
Infrastructure and services enable community connectivity (2.4.3)	<ul style="list-style-type: none"> Update the existing CBD Mobility Map to add other accessible facilities as well as village information. 	2014/2015	Community & Cultural Services	Operating Budget

Delivery Program (References to Council's Delivery Program is in brackets)	Actions	Time (year action to start)	Responsibility	Funding
Infrastructure and services enable community connectivity (2.4.3)	<ul style="list-style-type: none"> Explore incorporation of seating, shade, resting places and "Stop & Drop Zones" in the design of public spaces and facilities within the Singleton local government area. 	2014/2015	Planning & Sustainable Environment	Operating Budget
Infrastructure and services enable community connectivity (2.4.3)	<ul style="list-style-type: none"> Continue to improve bus stops, footpaths and kerb ramps to comply with Council's Disability Access Plan and the Disability and Discrimination Act. 	2015/2016 (ongoing)	Community & Cultural Services with Works	Operating Budget

Delivery Program (References to Council's Delivery Program is in brackets)	Actions	Time (year action to start)	Responsibility	Funding
Infrastructure and services enable community connectivity (2.4.3)	<ul style="list-style-type: none"> In conjunction with the Traffic and Parking Study, investigate the feasibility of a pedestrian crossing on George Street between Campbell and Macquarie Streets. 	2015/2016	Community & Cultural Services with Works	Operating Budget
Town centre appearance and function is enhanced (2.5.1)	<ul style="list-style-type: none"> Access issues be addressed in the construction of the Town Centre Revitalisation. 	2014/2015	Community & Cultural Services	Operating Budget

Our Environment

The Singleton local government area environment is enhanced, protected and balanced.

Delivery Program (References to Council's Delivery Program is in brackets)	Actions	Time (year action to start)	Responsibility	Funding
Implementation of Singleton Waste Strategy (3.2.2)	<ul style="list-style-type: none">Promote and encourage participation in the Household Composting Project.	2014/2015	Water & Waste	Operating Budget
Implementation of Singleton Waste Strategy (3.2.2)	<ul style="list-style-type: none">Increase the use of the Landfill Composting Station.	2014/2015	Water & Waste	Operating Budget
Implementation of Singleton Waste Strategy (3.2.2)	<ul style="list-style-type: none">Installation of recycling bins in the Singleton CBD.	2014/2015	Water & Waste with Parks & Facilities	Operating Budget

Our Community Leadership

The Singleton local government area community leadership is collaborative, informed, efficient and engaged.

Delivery Program (References to Council's Delivery Program is in brackets)	Actions	Time (year action to start)	Responsibility	Funding
The Community feels informed and has opportunity to connect (4.1.1)	<ul style="list-style-type: none">• Councillors and senior staff visit rural villages to inform the community of Council's decisions and vision.	2015/2016	Communication & Community Consultation	Operating Budget
Community participates in and owns decisions (4.2.1)	<ul style="list-style-type: none">• Ensure people who participate in community consultation for plans or strategies are given the opportunity to receive updates on those plans or strategies.	2014/2015	Cultural & Community Services with Communication & Community Consultation	Operating Budget

Delivery Program (References to Council's Delivery Program is in brackets)	Actions	Time (year action to start)	Responsibility	Funding
People want to work / stay / play in Singleton (4.3.1)	<ul style="list-style-type: none"> Provide flexibility in Council's employment practices to meet the varied and changing employment needs of people over 55. 	2013/2014 (Ongoing)	Human Resources	Operating Budget
People want to work / stay / play in Singleton (4.3.1)	<ul style="list-style-type: none"> Review Council's use of volunteers and ensure leading practice in working with volunteers is adopted with regard to training, equipment, supervision, insurance and flexibility thus providing opportunities for older people to contribute their skills and experience to the community. 	2014/2015	Economic Development with Community & Cultural Services	Operating Budget

Delivery Program (References to Council's Delivery Program is in brackets)	Actions	Time (year action to start)	Responsibility	Funding
Workplace practices are efficient, compliant and effective (4.5.1)	<ul style="list-style-type: none">Facilitate information sessions for older employees about employment and retirement.	2015/2016	Human Resources	Operating Budget

References

- Ageing, Disability and Home Care (ADHC)**, 2010, *A handbook for community care services: Empowering people, enhancing independence, enriching lives*.
- Ageing and Disability Department, NSW Health** 1998, *NSW Healthy Aging Framework*, 1998-2003. Sydney.
- Australian Government**, 2010, *Australia to 2050: future challenges*
- Australian Institute of Health and Welfare**, 2011, *Australia's Welfare 2011*, Canberra.
- Australian Institute of Health and Welfare**, 2013, *Australia's Welfare 2013*, Canberra.
- Australian Local Government Association**, 2004, *Australian Local Government Population Ageing Action Plan 2004-2008*, Australian Local Government Association, Deakin.
- Australian Local Government Association**, 2006, *Age-Friendly Built Environments: Opportunities for Local Government*. Australian Local Government Association, Canberra.
- Bagshaw, D, Wendt, S and Zannettino, L**, 2009, *Preventing the Abuse of Older People by their Family Members*, Australian Domestic & Family Violence Clearinghouse, Stakeholder Paper 7.
- City of Canterbury**, 2011, *Ageing Strategy 2011-2015*.
- Commonwealth of Australia** (2001) *National Strategy for Ageing Older Australia*, challenges and Opportunities for all. Canberra.
- Commonwealth of Australia**, 2002, *National Strategy for an Ageing Australia: An Older Australia, Challenges and Opportunities for all*.
- Commonwealth of Australia** (2009) *Physical Activities Recommendations for Older Australians*. Canberra.
- COTA (NSW)**, 2013, *Inaugural 50+ Report*
- COTA (NSW)**, 2013, *Creating Age Friendly Communities: A workshop resource for local government*.
- Davey, J and Glasgow, K**, 2006, *Positive Ageing – A Critical Analysis*, Policy Quarterly, Vol 2, No 4.

Department of Health, 2000, *National Strategy for an Ageing Australia*. Fact Sheet.

Department of Health, Australian Government.

New South Wales Government, 2011, *Towards 2030: planning for our changing population, 2nd year progress report*.

Penrith City Council, 2010, *Planning for an Ageing Community Strategy 2010+*

Productivity Commission, 2011, *Caring for Older Australians*, Productivity Commission Report

World Health Organisation, 2002, *Active Ageing: A Policy Framework*, World Health Organisation, Ageing and Life Course Programme, Switzerland.

World Health Organisation, 2007, *Checklist of Essential Features of Age-friendly Cities*, WHO/FCH/ALC/2007.1 Switzerland.

Further Information

If you have any queries regarding the content of this document, please contact the Community Development Team on 02 6578 7290.

